



# GAT MONTHLY MEMBERSHIP PROGRESS REPORT

Results as of: 6/30/2023

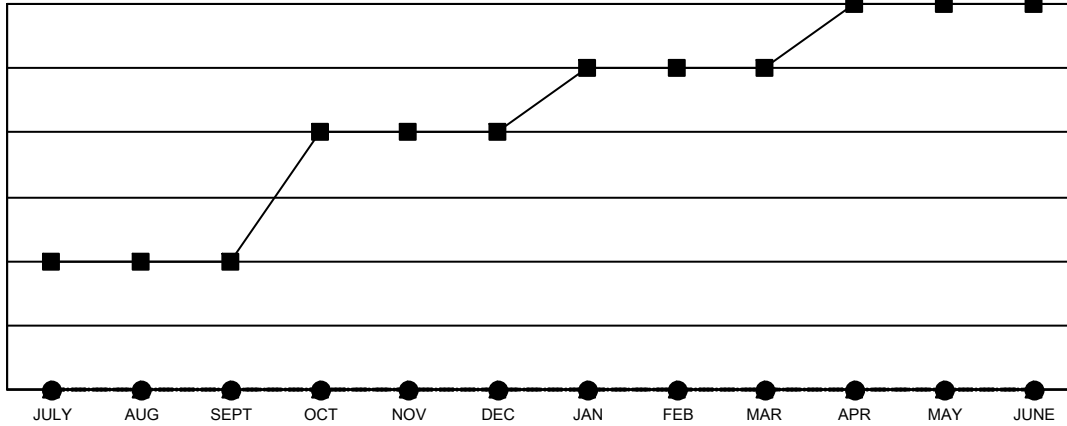
Multiple District 3

LOCATION: OKLAHOMA

| Clubs                 |               |           |               |
|-----------------------|---------------|-----------|---------------|
| RESULTS FOR 2022-2023 |               |           |               |
| QUARTER               | NEW CLUB GOAL | NEW CLUBS | DROPPED CLUBS |
| JULY/AUG/SEPT         | 2             | 0         | 1             |
| OCT/NOV/DEC           | 2             | 0         | 1             |
| JAN/FEB/MAR           | 1             | 0         | 0             |
| APR/MAY/JUNE          | 1             | 0         | 2             |

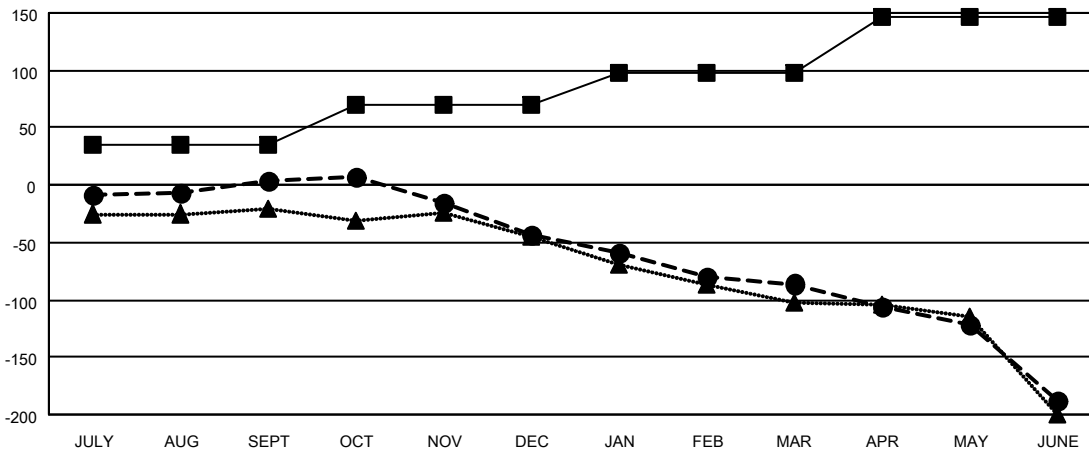
| Members               |                        |                      |                                              |
|-----------------------|------------------------|----------------------|----------------------------------------------|
| RESULTS FOR 2022-2023 |                        |                      |                                              |
| QUARTER               | MEMBER GROWTH NET GOAL | MEMBER GROWTH ACTUAL | DROPPED MEMBERS ACTUAL (including transfers) |
| JULY/AUG/SEPT         | 35                     | 100                  | 88                                           |
| OCT/NOV/DEC           | 35                     | 63                   | 104                                          |
| JAN/FEB/MAR           | 28                     | 57                   | 80                                           |
| APR/MAY/JUNE          | 48                     | 70                   | 168                                          |

GOALS AND ACTUAL NEW CLUBS CUMULATIVE



- CURRENT YEAR GOALS FOR NEW CLUBS
- CURRENT YEAR ACTUAL NEW CLUBS
- ▲- LAST YEAR ACTUAL NEW CLUBS

GOALS AND ACTUAL MEMBERS CUMULATIVE



- MEMBER GROWTH NET GOAL
- MEMBER GROWTH ACTUAL
- ▲- LAST YEAR MEMBERSHIP ACTUAL

|                         |                                                           |                                      |
|-------------------------|-----------------------------------------------------------|--------------------------------------|
| <b>DROPPED CLUBS: 4</b> | 68 CLUBS OF 138 ADDED 1 OR MORE NEW MEMBERS               | <b>GENDER DISTRIBUTION</b>           |
| <b>DROPPED MEMBERS</b>  | <a href="#">CLICK HERE FOR CUMULATIVE MEMBERSHIP DATA</a> | MALE 1,922 (65.98%)                  |
| DECEASED 42             |                                                           | FEMALE 990 (33.99%)                  |
| CLUB CANCELLED 36       |                                                           | NON BINARY 0 (0.00%)                 |
| OTHER 362               |                                                           | PREFER NOT TO ANSWER 1 (0.03%)       |
| <b>TOTAL 440</b>        |                                                           | <b>TOTAL FAMILY UNIT MEMBERS 424</b> |
|                         |                                                           | FAMILY MEMBERS PAYING HALF DUES 214  |